

Steam Sterilizer (Laboratory Use, Compact)

SN200/210/300/310/500/510

Operating temp. range 45°C to 135°C

Internal capacity 20L SN200/210 32L SN300/310 47L SN500/510

- Maximum sterilizing temperature goes up to 135°C suitable for protein modification
- By simple setting and operation, these sterilizers manage ordinary sterilization, sterilization of culture mediums and liquids, and melting of culture mediums
- Custom programs can be saved for repeated use
- Standard equipped with slow release valve and cooling fan to shorten cool down time
- Mobile on wheels

Enhanced safety device

- Lid interlock mechanism
- Drain bottle unset alarm
- Automatic shutdown when malfunction
- Self-diagnostic functions



20L
SN200

32L
SN300

47L
SN500

Specifications

Model	SN200	SN210	SN300	SN310	SN500	SN510
System	Automatic high-pressure steam sterilization					
Operating temperature range	45~135°C (45~80°C (Preheating temperature)/45~60°C (Heat-retention process)/65~100°C (Solution process)/105~135°C (Sterilization))					
Max. working pressure	0.255MPa					
Ambient temperature	5~35°C					
Lid	Manual upward opening with an interlock for safety					
Heater	100V, 600W×2 units		100V, 800W×2 units		100V, 950W×2 units	
Exhaust valve	One exhaust valve and one slow release valve					
Connection ports for optional accessories	Total 3 ports. Female thread for sample temp. sensor (1/4"), Female thread for chamber temp. sensor (1/4"), Female thread pressure sensor (Branching from the solenoid valve tubing)					
Cooling fan	Axial fan motor					
Temp. controller	PID control by microprocessor					
Temp. display / setting	Digital display / digital setting by ▲/▼ keys					
Timer / Timer resolution	0 or 1 min. to 99 hrs 59 min. / 1 min.					
Operation mode	Instrument sterilization course, Liquid sterilization course, Sterilization and keep warm course, Melting and keep warm course, Customer-programmed course					
Other functions	Key locking, Presetting, Saving, Preheating, Forced cooling, Sample temperature sensor (option), Pattern locking, Up to 20 error log saving, Display of accumulated working time / Present time, ON-OFF beeping setting					
Safety device	Sensor failure detection, SSR short-circuit, Broken heater wire, Prevention of idle heating (Liquid expansion type), Alarm against the absence of a drain bottle, Failure in locking the lid, Memory error detection, Pressure relief valve (0.255 MPa)					
External dimensions (W×D×Hmm)	400×530×840		460×590×848		460×590×1068	
Internal dimensions of chamber	I.D.240×D445 mm		I.D.300×D445 mm		I.D.300×D665 mm	
Internal capacity	20L		32L		47L	
Weight	Approx. 65kg		Approx. 75kg		Approx. 85kg	
Power source (50/60Hz single phase)	AC100~120V(12.5~15A)	AC200~240V(6.5~7.5A)	AC100~120V(16.5~20A)	AC200~240V(8.5~10A)	AC100~120V(19.5~23.5A)	AC200~240V(10~12A)
Accessories	2 pcs. stainless steel mesh basket (Dia.209×D204mm), OSM-60		2 pcs. stainless steel mesh basket (Dia.266×D204mm), OSM-70		3 pcs. stainless steel mesh basket (Dia.266×D204mm), OSM-70	
	Vapor cup×1, Drain bottle×1, Drain board×1, Filter×1					

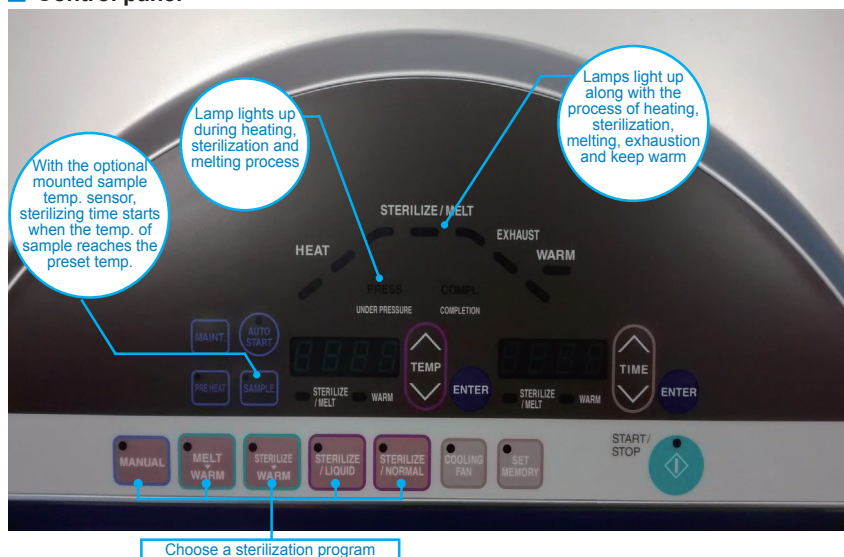
Self-diagnosis

Key lock

Operation monitor

Overcurrent
ELB

Control panel



Sterilize/Normal Course	Sterilization of equipment such as flask, beaker, test tube, scissors
Sterilize/Liquid Course	Sterilization of culture and reagents and keep warm
Sterilize Warm Course	Dissolve and keep warm of the agar medium
Melt Warm Course	Sterilization of liquid, purified water and dilution water
Manual Course	Customized temperature and time settings

Standard Equipped with Cooling Fan & Slow Release Valve

- For decompression and prevention of liquid samples from bumping
- Cooling fan cool to a safe temperature after sterilization completes
- Shortens time before samples are taken out
- Natural cooling by OFF setting

Features

Support GLP / GMP Inspection



Standard equipped with 2 sensor ports on the main unit



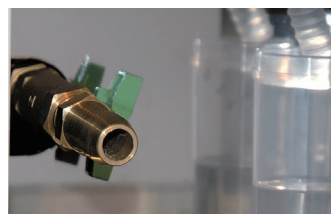
Optional recorder and high performance pressure gauge

Sterilization starts automatically by sample temperature sensor



With the optional mounted sample temperature sensor, desired sample temperature can be precisely maintained to ensure thorough sterilization

Easy to drain out sterilizing water



Easier maintenance with larger diameter drain pipe

Front Loading Drain Bottle



The drain bottle is located in front for easy access and drain water level can be monitored without opening the cabinet door

Optional items



Stainless baskets



Stainless buckets

Description	Model	Corresponding models	Product code
Mesh basket	OSM-60	SN200/210	241087
	OSM-70	SN300/310/500/510	241088
	OSM-80	SN500/510	241089
Mesh basket with stacking fittings	OSQ-30	SN200/210, with 2 fittings/set	241093
	OSQ-40	SN300/310, with 2 fittings/set	241092
	OSQ-50	SN500/510, with 3 fittings/set	241091
Mesh basket with adjustable stainless steel perforated plate	OSQ-60	SN200/210, with 1 mesh shelf	241096
	OSQ-70	SN300/310, with 1 mesh shelf	241095
	OSQ-80	SN500/510, with 2 mesh shelf	241094
Stainless solid basket	OSR-10	SN200/210	241083
	OSR-20	SN300/310/500/510	241084
Stainless bucket	OSN10	SN200/210	241150
	OSN12	SN300/310/500/510	241151
*Chamber temperature sensor, 3pcs/set	OSR-70	All models	241153
*Sample temperature sensor, 1pc	OSN16	All models	241154
*Pressure gauge	OSN18	All models	241155
*External alarm output terminal	OSN20	All models	241157
*Temperature output terminal (4~20mA)	OSN22	All models	241158
*Time-up output terminal (Relay, contact output)	OSN24	All models	241159

* Please specify when ordering main unit.